

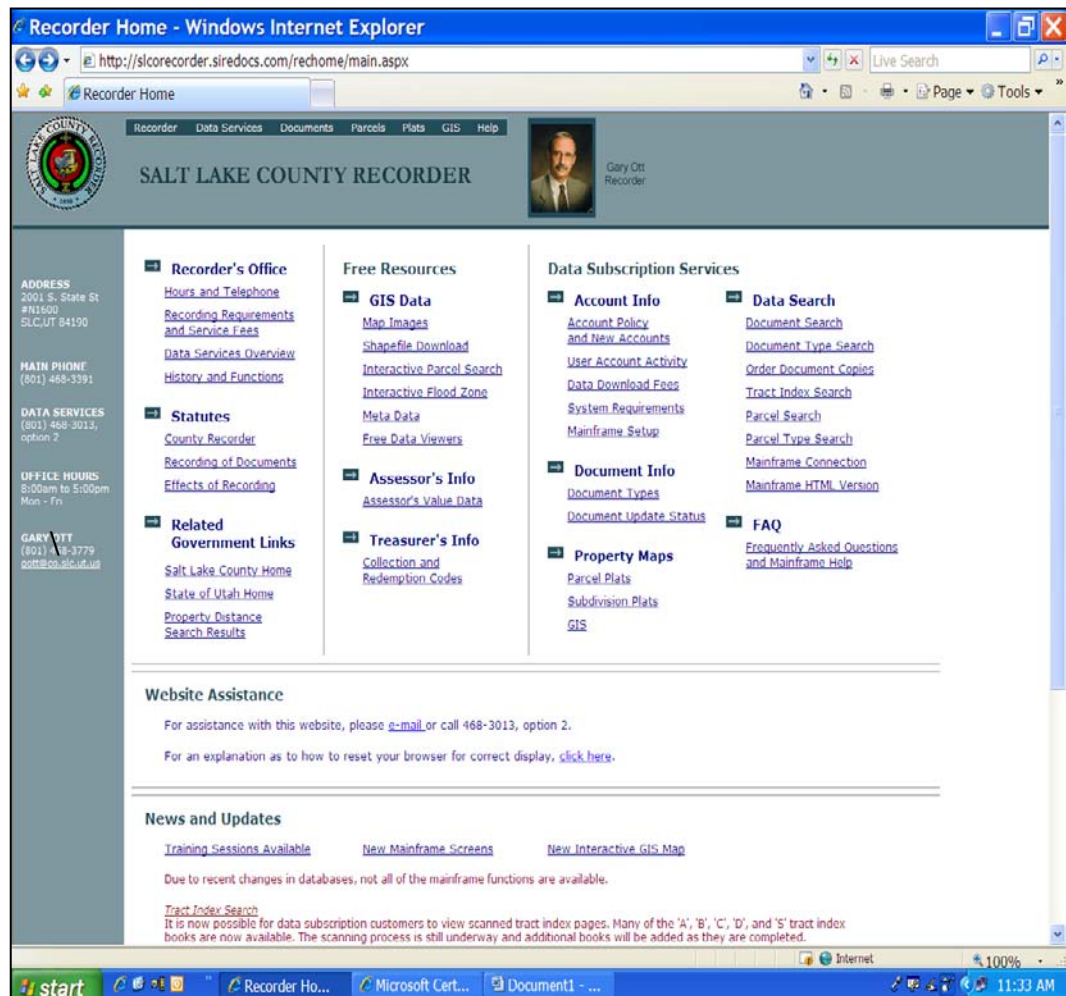
SALT LAKE COUNTY RECORDER DATA SERVICES

I. Mainframe Setup Access

A. Initial Setup Instructions

Before access to the use of the features of the Salt Lake County Recorder Data Services can be available, make sure two things are in place: 1) the correct system requirements; 2) the installation of the correct version of the Java application.

1. To make sure the correct system requirements are in place, open the **Salt Lake County Recorder's Home Web Page**. To access the website, type the following URL address: <http://slcorecorder.siredocs.com> and press the [ENTER] Key. The screen should look similar to the following:



The Recorder's Home Web Page contains a number of different options that are available, all of which are shown in blue.

<p>Recorder's Office Hours and Telephone Recording Requirements and Service Fees Data Services Overview History and Functions</p> <p>Statutes County Recorder Recording of Documents Effects of Recording</p> <p>Related Government Links Salt Lake County Home State of Utah Home Property Distance Search Results</p>	<p>Free Resources</p> <p>GIS Data Map Images Shapefile Download Interactive Parcel Search Interactive Flood Zone Meta Data Free Data Viewers</p> <p>Assessor's Info Assessor's Value Data</p> <p>Treasurer's Info Collection and Redemption Codes</p>	<p>Data Subscription Services</p> <p>Account Info Account Policy and New Accounts User Account Activity Data Download Fees System Requirements Mainframe Setup</p> <p>Document Info Document Types Document Update Status</p> <p>Property Maps Parcel Plats Subdivision Plats GIS</p> <p>Data Search Document Search Document Type Search Order Document Copies Tract Index Search Parcel Search Parcel Type Search Mainframe Connection Mainframe HTML Version</p> <p>FAQ Frequently Asked Questions and Mainframe Help</p>
--	---	---

- a. To check the requirements..., under the option “**Account Info**”, highlight and select “**Mainframe Setup**”. The “**Mainframe Client Access Setup**” window will be displayed

MainFrame Client Access Setup

For detailed instructions in PDF [click here.](#)

<p>Why is this update important?</p>	<p>This update is intended to increase reliability of and dramatically increase the number of licenses available on and</p>
--------------------------------------	---

Note: This option is not updated

<p>System Requirements</p>	<ul style="list-style-type: none"> - Updated version of Windows 98/NT/ME/2000/XP. Click here to run update. - Microsoft Internet Explorer 5.0 or higher with 128 bit encryption. Get it here. - Internet connection speed of 56 kbps or faster.
----------------------------	--

To check the current version of Internet Explorer, doing the following:

- Open Internet Explorer
- Click on “**Help**” from the **Menu Bar**
- Choose “**About Internet Explorer**” from the drop-down menu

An information box will appear showing the version and cipher strength (encryption).

B. Updating the Software



Note: If applicable-- talk to the system administrator before updating any programs on your workstation.

MainFrame Client Access Setup

For detailed instructions in PDF [click here.](#)

Why is this update important? This update is intended to increase reliability of the mainframe connection and dramatically increase the number of licenses available to users.

System Requirements

- Updated version of Windows 98/NT/ME/2000/XP. [Click here to run update.](#) 
- Microsoft Internet Explorer 5.0 or higher with 128 bit encryption. [Get it here.](#) 
- Internet connection speed of 56 kbps or faster.

1. Internet Explorer (if not 5.0 or higher)
 - a. From the “**MainFrame Client Access Setup**” window click “**Get it here**”.
or...

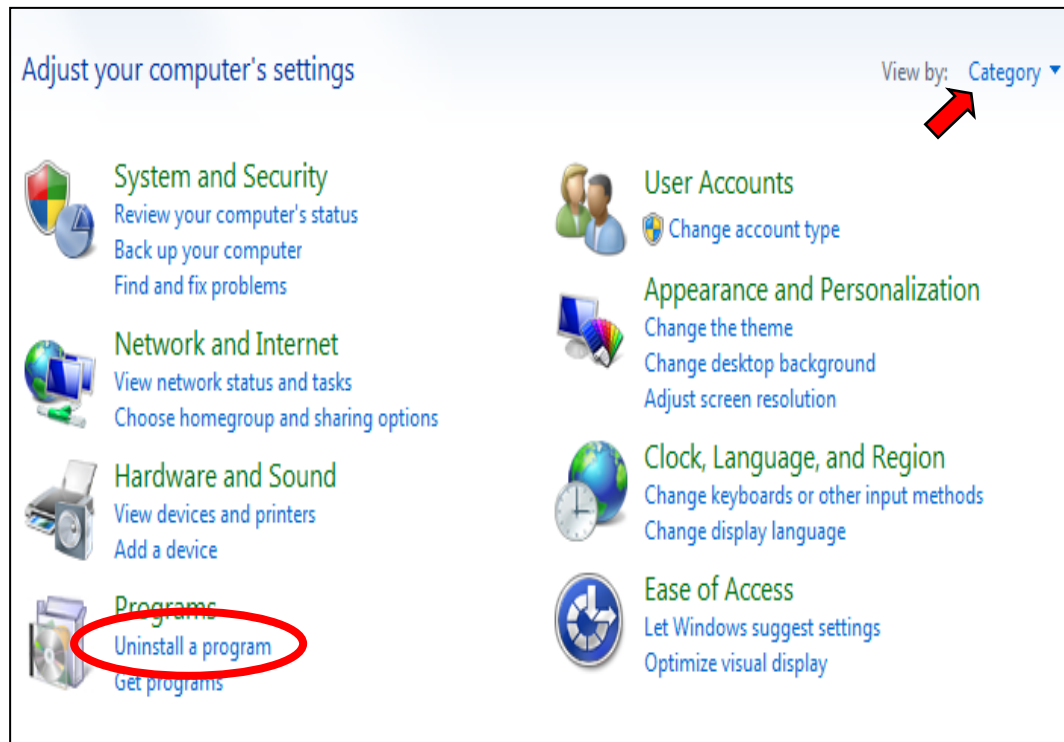
Go to: <http://www.microsoft.com/windows/ie/default.asp>
 - Select “**download now**”. It may be necessary to select “**Downloads**” from the menu.
 - Click the “**Go**” button located on the right side of the window.
 - Follow the instructions on the pages that follow.
2. Windows Updates (MUST BE INSTALLED)
 - a. From the “**MainFrame Client Access Setup**” window click “**run update**”.
or...

Go to: <http://windowsupdate.microsoft.com>
 - Click the arrow that says, “*Scan for updates*”.
 - Click the arrow that says, “*Review and install updates*”
 - A page titled, “Total Selected Updates” with a list of all the updates that may be installed on your computer will be shown.
 - All the service packs and critical updates that are related to Windows or Internet Explorer must be installed.
 - Click the “Install Now” button.
 - This may take several hours based on the number of updates and the connection speed.
 - Now, it will be necessary to restart the computer.

C. Remove Old Java Applications

The correct version of Java must be installed. *Note: The current updated version of Java is 6 update 31. **However, any version of Java that is above 6 update 21 will not work on the Recorder web site.** However, it is possible to have a 64 bit version along with the required 32 bit running at the same time. Before the correct version of Java can be installed, old Java applications must first be removed.*

1. To uninstall old versions of Java, first close completely out of Internet Explorer.
 - a. Click the “**Start**” button located at the bottom-left corner of the screen.
 - b. Select “**Control Panel**”. *Control Panels might look differently.*



- c. Make sure the “View by:” located in the upper-right corner is “**Category**”. If it is not “Category”, click the down arrow and select “**Category**”.
- d. Select “**Uninstall a program**”. If the Control Panel looks differently, rather than “Uninstall a program”, it might read “Remove or Add programs”, or something similar. Once selected, a window of all the currently installed programs listed in alphabetical order will be displayed similar to the following shown on the next page:

Uninstall or change a program

To uninstall a program, select it from the list and then click Uninstall, Change, or Repair.

Organize ▾ Uninstall

Name	Publisher	Installed On	Size	Version
Adobe AIR	Adobe Systems Incorporated	11/15/2011		3.1.0.4880
Adobe Flash Player 11 ActiveX	Adobe Systems Incorporated	3/20/2012	3.61 MB	11.1.102.63
Adobe Flash Player 11 Plugin	Adobe Systems Incorporated	3/20/2012	6.00 MB	11.1.102.63
Adobe Reader X (10.1.2)	Adobe Systems Incorporated	1/11/2012	127 MB	10.1.2
Brava! Reader 7.1	IGC	3/23/2012		7.1
Broadcom Management Programs	Broadcom Corporation	9/11/2010		12.35.01
Google Earth Plug-in	Google	12/27/2011	40.8 MB	6.1.0.5001
Google Toolbar for Internet Explorer	Google Inc.	1/17/2012		7.2.2427.2330
IBM Personal Communications	IBM	9/21/2010	101 MB	5.7.0000
Intel® Control Center	Intel Corporation	10/1/2010	1.46 MB	1.2.1.1007
Intel® Rapid Storage Technology	Intel Corporation	10/1/2010	18.4 MB	9.6.0.1014
Java(TM) 6 Update 20	Sun Microsystems, Inc.	3/22/2012	97.2 MB	6.0.200
McAfee Security Scan Plus	McAfee, Inc.	4/1/2011	8.30 MB	2.0.181.2
Microsoft .NET Framework 4 Client Profile	Microsoft Corporation	9/21/2010	38.8 MB	4.0.30319
Microsoft .NET Framework 4 Extended	Microsoft Corporation	2/21/2012	51.9 MB	4.0.30319
Microsoft Office Outlook Connector	Microsoft Corporation	3/9/2011	3.34 MB	14.0.5118.5000
Microsoft Office Professional 2010	Microsoft Corporation	8/9/2011		14.0.6029.1000
Microsoft Office Professional Plus 2007	Microsoft Corporation	11/28/2011		12.0.6612.1000
Microsoft Outlook Social Connector Provider for Win...	Microsoft Corporation	3/9/2011	1.38 MB	14.0.5120.5000
Microsoft Silverlight	Microsoft Corporation	2/6/2012	190 MB	5.0.61118.0
Microsoft SQL Server 2005 Compact Edition [ENU]	Microsoft Corporation	9/11/2010	1.72 MB	3.1.0000
Microsoft SQL Server 2008 Native Client	Microsoft Corporation	3/12/2012	2.75 MB	10.1.2531.0
Microsoft SQL Server Native Client	Microsoft Corporation	1/10/2011	2.39 MB	9.00.3042.00
Microsoft Visual C++ 2005 Redistributable	Microsoft Corporation	3/23/2012	300 KB	8.0.61001
Microsoft Visual C++ 2008 Redistributable - KB24671...	Microsoft Corporation	4/20/2011	598 KB	9.0.30729.5570

- e. From the alphabetical list of programs shown on the screen click Java. However, if **Java (TM)6 Update 20** is listed, do not uninstall this version. If the version(s) of Java reads anything that **is(are) not below Update 22**, those versions will need to be uninstalled.
- f. Click the version of java to uninstall, and then click the “**Uninstall**” option located at the top of the window.
- g. When asked if you are sure you want to uninstall, click “**Yes**”.
- h. When finished, close all windows.

D. Installing Updated Java Application

1. **Note: Before installing Java, make sure all Pop-up Blockers are turned off.** From the Internet window, select “**Tools**” from the menu and click “**Pop-up Blocker**” and select “**Turn off Pop-up Blocker**”. After turning off Pop-up Blocker, it should read, “**Turn on Pop-up Blocker**”. It must read “Turn on Pop-up Blocker”.
2. Go to the Internet Explorer and type the following address:

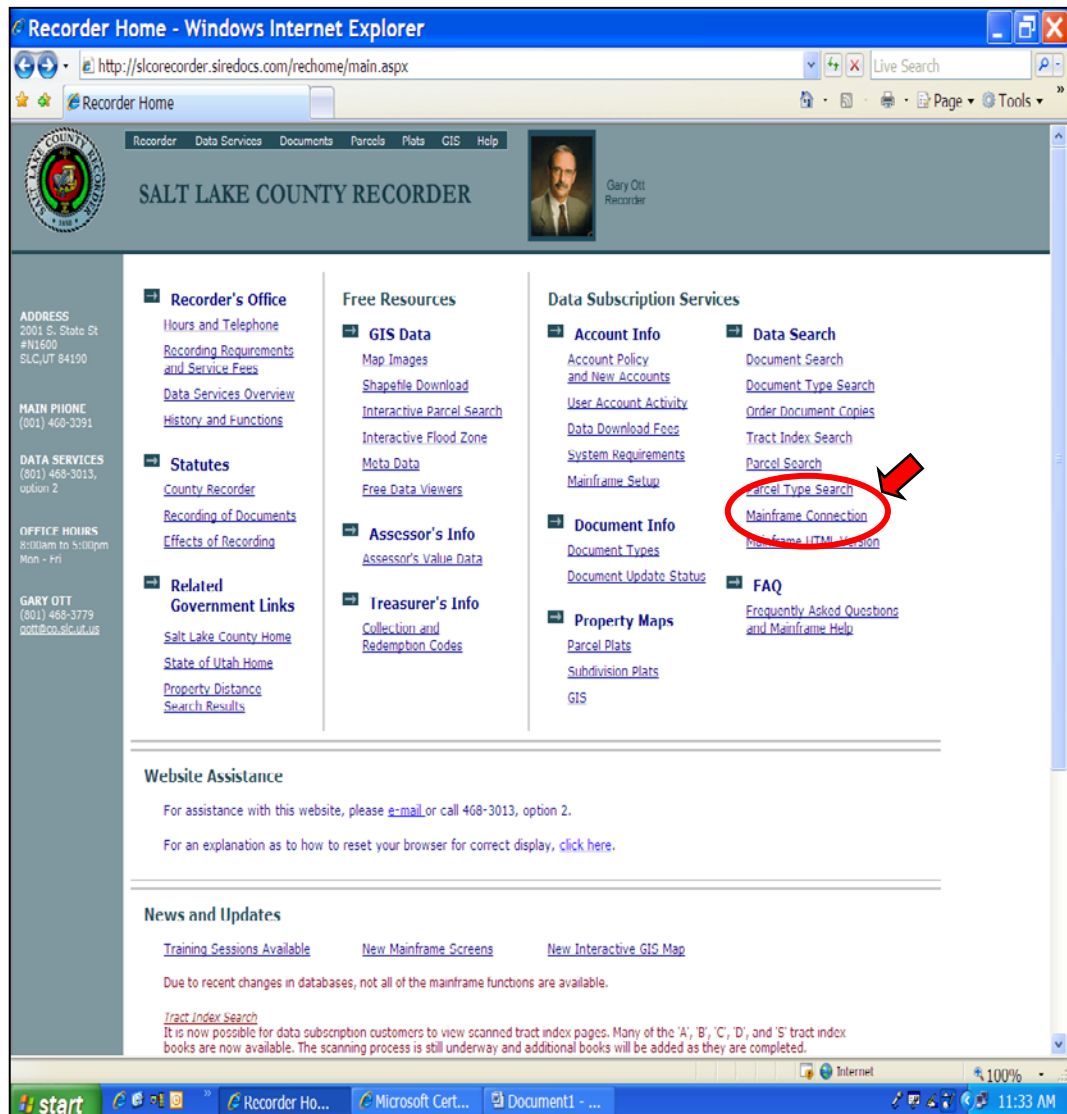
<http://www.oracle.com/technetwork/java/archive-139210.html>

- a. Select **Java SE 6** version. A list of Java SE6 downloads will be displayed. Scroll down the list and select **Java SE Runtime Environment 6u20**.
- b. Accept the License Agreement.
- c. Install the **Windows Offline Installation version**.

- d. Oracle will require the creation of an Oracle account. In the box that displays, “**Why Sign In?**” click “**Create your Oracle account now**”.
- e. After Java is installed, close the internet Explorer, and then return to the Salt Lake County Recorder Home page.

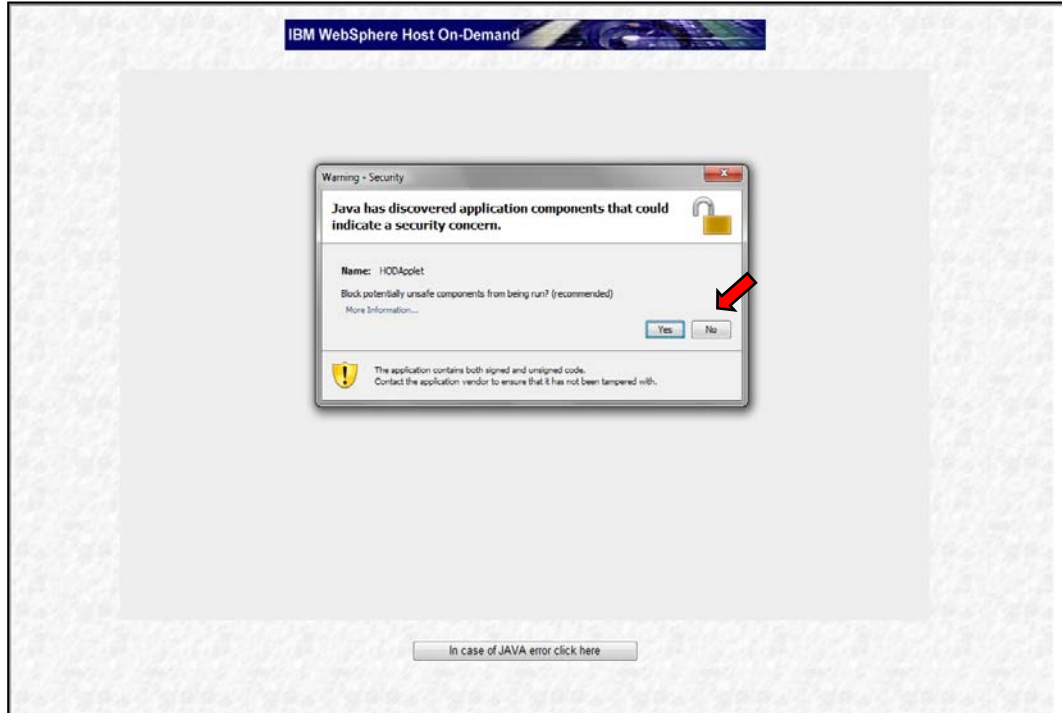
E. Connecting to the Mainframe

1. Open the Recorder’s Home Web Page: <http://slcorecorder.siredocs.com>.

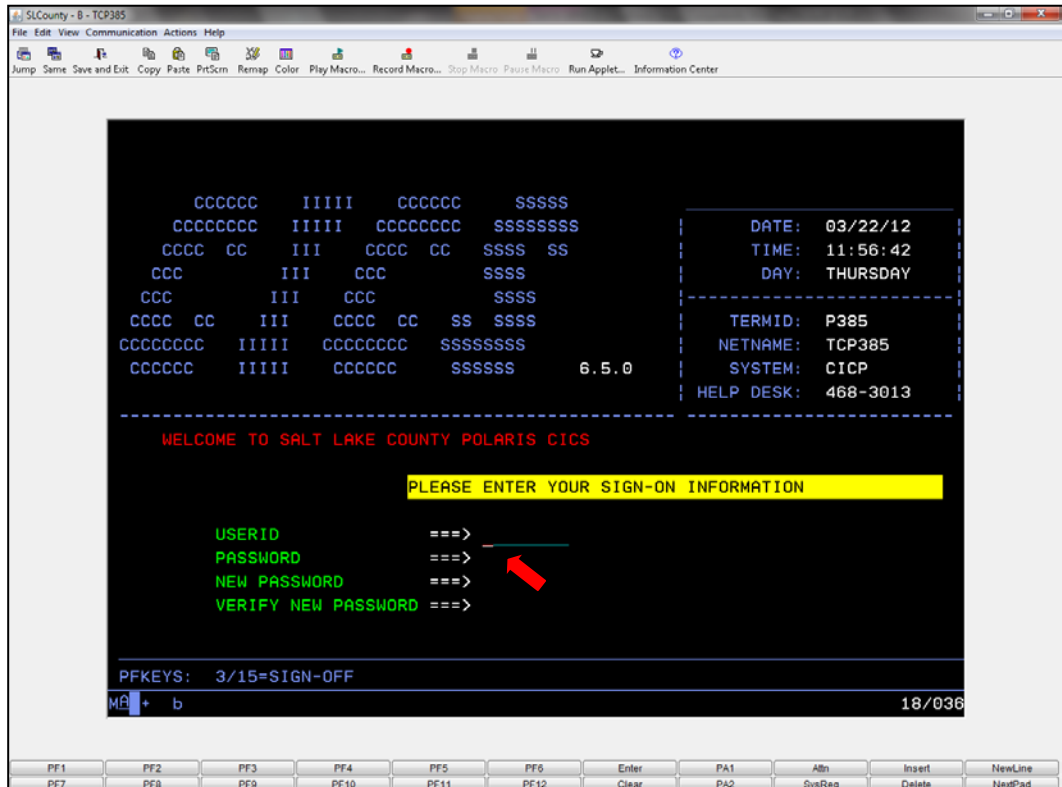


2. Click “**Mainframe Connection**”.

The “IBM WebSphere Host On-Demand” window will be displayed.



3. If the small box in the center (shown above) can be seen indicating there might be a security concern, ignore this and click “No”. Several seconds might be required to see the “Login” screen. The window with a yellow strip that highlights the words, “PLEASE ENTER YOUR SIGN-ON INFORMATION”, is the Login screen.



After entering your **USERID** and **PASSWORD**, you will be connected to the Salt Lake County Recorder Data Services mainframe screens.

Note: If the mainframe screen does not appear after clicking mainframe connection, run the following link to download a shortcut onto your desktop: <https://slcpolaris.slco.org/hod/SLCRECWS.inlp>

F. Connecting to the Mainframe Without Java

Access to another version of the mainframe from the Recorder's Home page is also available without having to download Java.

1. Open the Recorder's Home page and click "**Tax System (Mainframe) Searches**".

SALT LAKE COUNTY RECORDER

Recorder Data Services Documents Parcels Plats GIS Help

Gary Ott Recorder

Recorder's Office
Hours and Telephone
County Government Holidays
Recording Requirements and Service Fees
Data Services Overview
History and Functions
Note: The Recorder's office does not accept credit cards. All payments must be made by cash or check.
Statutes
County Recorder
Recording of Documents
Effects of Recording

Free Resources
Verify Certified Copy
GIS Data
Map Images
Shapefile Download
Interactive Parcel Search
Interactive Flood Zone
Meta Data
Free Data Viewers

Assessor's Info
Assessor's Value Data

Treasurer's Info
Treasurer's Collection and Redemption Codes

Data Subscription Services
Account Info
Account Policy and New Accounts
User Account Activity
Data Download Fees
System Requirements
Mainframe Setup
Document Info
Document Types
Document Update Status
Property Maps
Parcel Plats
Subdivision Plats
GIS
Interactive GIS

Data Search
Document Search
Document Type Search
Order Document Copies
Order Certified Copies
Tract Index Search
Parcel Search
Parcel Type Search
Mainframe Connection
Mainframe HTML Viewer
Tax System (Mainframe) Searches
FAQ and Help
Questions and Mainframe Help
Download User Tutorials

ADDRESS
2001 S. State St
#N1600
SLC, UT 84190

MAIN PHONE
(801) 468-3391

DATA SERVICES
(801) 468-3013,
option 2

OFFICE HOURS
8:00am to 5:00pm
Mon - Fri

GARY OTT
(801) 468-3391
gott@slco.slco.org

E-MAIL
RecorderQ@slco.org

2. Select "**Parcel Date (VTDI) and Documents (RXPN) for Parcel Number or Parcel Location Address**".

SALT LAKE COUNTY RECORDER

Recorder Data Services Documents Parcels Plats GIS Help Log Out

Tax System (Mainframe) Searches [Return to Home Page](#)

[Document Entry Numbers Grouped by Recorded Date \(RXDE\)](#)

[Documents by Entry Number \(RXEY\)](#)

[Documents by Document Type and Recorded Date \(RXDT\)](#)

[Documents by Party Name \(RXPS\)](#)

[Parcel Data \(VTDI\) and Documents \(RXPN\) for Parcel Number or Parcel Location Address](#)

[Document Details, Search by Entry Number \(RXEN, RXDU\) or Book and Page \(RXBK\)](#)

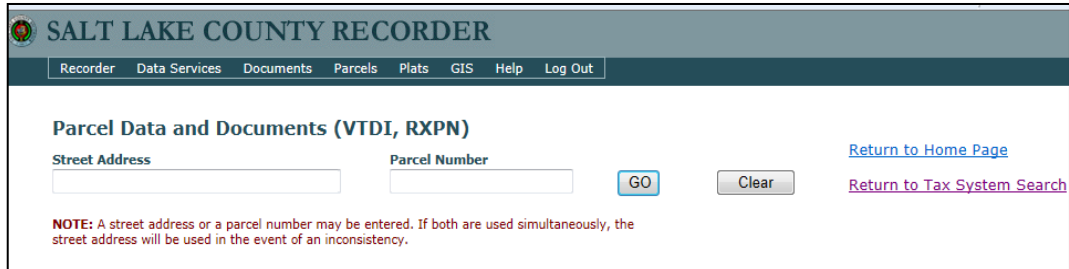
[Abstract Search \(RXPS, RXAB\)](#)

[Subdivision/Dedication Name List, Abstract \(RXAB\), Details \(RXKP\), Lot and Parcel Numbers \(RXLP\)](#)

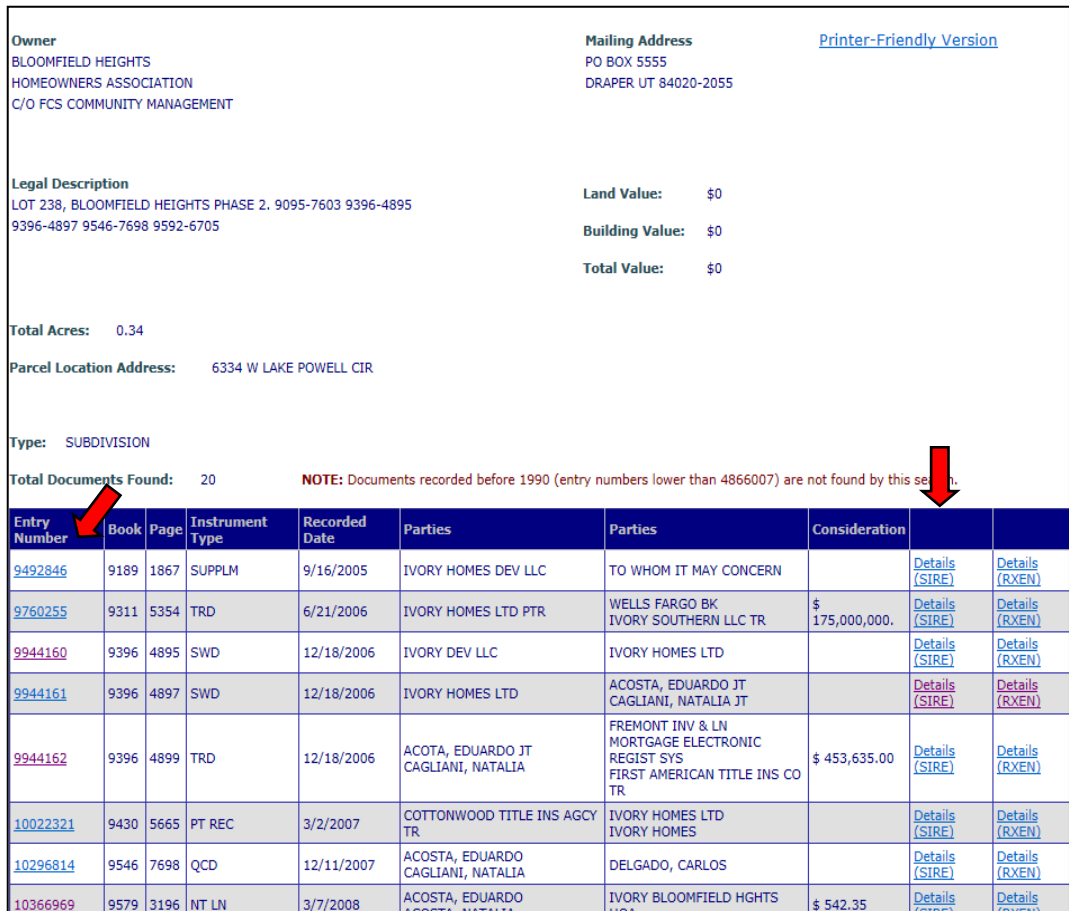
[Delinquent Taxes, Search by Parcel Number \(PIRD -> RQ -> RS\)](#)

[Tax Liens, Search by Name \(RXTX\)](#)

After making the selection a window similar to the following will be displayed:



3. Either the parcel number or the street address can be entered. After entering the information, click “Go”.



Owner
BLOOMFIELD HEIGHTS
HOMEOWNERS ASSOCIATION
C/O FCS COMMUNITY MANAGEMENT

Mailing Address
PO BOX 5555
DRAPER UT 84020-2055

[Printer-Friendly Version](#)

Legal Description
LOT 238, BLOOMFIELD HEIGHTS PHASE 2. 9095-7603 9396-4895
9396-4897 9546-7698 9592-6705

Land Value: \$0
Building Value: \$0
Total Value: \$0

Total Acres: 0.34

Parcel Location Address: 6334 W LAKE POWELL CIR

Type: SUBDIVISION

Total Documents Found: 20 **NOTE:** Documents recorded before 1990 (entry numbers lower than 4866007) are not found by this search.

Entry Number	Book	Page	Instrument Type	Recorded Date	Parties	Parties	Consideration	Details (SIRE)	Details (RXEN)
9492846	9189	1867	SUPPLM	9/16/2005	IVORY HOMES DEV LLC	TO WHOM IT MAY CONCERN		Details (SIRE)	Details (RXEN)
9760255	9311	5354	TRD	6/21/2006	IVORY HOMES LTD PTR	WELLS FARGO BK IVORY SOUTHERN LLC TR	\$ 175,000.00.	Details (SIRE)	Details (RXEN)
9944160	9396	4895	SWD	12/18/2006	IVORY DEV LLC	IVORY HOMES LTD		Details (SIRE)	Details (RXEN)
9944161	9396	4897	SWD	12/18/2006	IVORY HOMES LTD	ACOSTA, EDUARDO JT CAGLIANI, NATALIA JT		Details (SIRE)	Details (RXEN)
9944162	9396	4899	TRD	12/18/2006	ACOTA, EDUARDO JT CAGLIANI, NATALIA	FREMONT INV & LN MORTGAGE ELECTRONIC REGIST SYS FIRST AMERICAN TITLE INS CO TR	\$ 453,635.00	Details (SIRE)	Details (RXEN)
10022321	9430	5665	PT REC	3/2/2007	COTTONWOOD TITLE INS AGCY TR	IVORY HOMES LTD IVORY HOMES		Details (SIRE)	Details (RXEN)
10296814	9546	7698	QCD	12/11/2007	ACOSTA, EDUARDO CAGLIANI, NATALIA	DELGADO, CARLOS		Details (SIRE)	Details (RXEN)
10366969	9579	3196	NT LN	3/7/2008	ACOSTA, EDUARDO ACOSTA, NATALIA	IVORY BLOOMFIELD HGHTS HOA	\$ 542.35	Details (SIRE)	Details (RXEN)

As seen, this option displays the ownership and abstract of the property.

- a. If an entry number is selected, there will be charge of \$0.02 for each page in the document.
- b. If “**Details (SIRE)**” is selected only the page or pages desired will be opened.
- c. Select **Details (SIRE)**. See next page.

From this window you can now select just the pages you wish to view.

SALT LAKE COUNTY RECORDER

Recorder Data Services Documents Parcels Plats GIS Help Log Out

Search for Document by **Entry Number** [Return to Home Page](#)

Search for Document by **Parcel Number** [Return to Document Search Guidelines](#)

Search for Document by **Book and Page** Book Page

Search for Document by **Recorded Date** Year Month Day

Search for Document by **Party** First Second Party

Search for Document by **Subdivision** [Return to Document Type Search](#)
[Order E-Certified Copy](#)

Document:	10409683	First Party:	ACOSTA, EDUARDO CAGLIANI, NATALIA
Recorded Date:	4/24/2008	Second Party:	TO WHOM IT MAY CONCERN
Document Type:	NT DF	Area/Section:	20/35
Conveyance Type:	NON-CONVEYANCE	Subdivision:	BLOOMFIELD HGHTS PH 2
Book:	9598	First Parcel:	20351530090000
Page:	8320		

Document Pages:

1 | 2

As shown above, this particular document has a total of only two pages.

Note: There is a \$0.02 charge for each page opened.

“**Document Pages:**” allows one to open just one page at a time, and then, just the specific page number selected. If the “1” at the bottom of the screen is selected, only page “1” of the document will be displayed. If the “2” is selected, only page “2” will be displayed, etc.

Regardless of the number of pages, clicking this button will download **all** the pages included in the entire document. There will be a charge of **\$0.02** for **each** page in the document.

Clicking this button displays miniature images of all the pages allowing only specific page(s) to be opened.

In this example, a "Notice of Default" is displayed.

10409683 (circled) → Entry Number for this Notice of Default

10409683
 4/24/2008 4:16:00 PM \$12.00
 Book - 9598 Pg - 8320-8321
 Gary W. Ott
 Recorder, Salt Lake County, UT
 SCALLEY & READING BATES HANSEN
 BY: eCASH, DEPUTY - EF 2 P.

ELECTRONICALLY RECORDED FOR:
 Marlon L. Bates
 SCALLEY READING BATES
 HANSEN & RASMUSSEN, P.C.
 15 West South Temple, Ste 600
 Salt Lake City, Utah 84101
 Telephone No. (801) 531-7870
 Business Hours: 9:00 am to 5:00 pm
 Trustee No. 26026-02
 Parcel No. 20-35-153-009

NOTICE OF DEFAULT

NOTICE IS HEREBY GIVEN by Marlon L. Bates, successor trustee, that a default has occurred under the Deed of Trust executed by Eduardo Acosta and Natalia Cagliani, as trustor(s), in which DNH Investments, LLC is named as beneficiary, and Surety Title Agency is appointed trustee, and filed for record on **April 18, 2008**, and recorded as Entry No. **10404771**, in Book 9596, at Page 6372, Records of Salt Lake County, Utah.

April 18, 2008 (circled) → Date recorded
 FILED EXHIBIT "A" → Entry number for the original loan document which is

A breach of an obligation for which the trust property was conveyed as security has occurred. Specifically, the trustor(s) failed to pay the entire principle balance and all accrued interest and other charges on or before May 15, 2007, as required by the Note. Therefore, pursuant to the demand and election of the beneficiary, the trustee hereby elects to sell the trust property to satisfy the delinquent obligations referred to above. The entire principal balance and all accrued interest and other charges, costs, taxes and assessments must be paid in full within **three months** of the recording of this notice to cure the default.

DATED this 24 day of April, 2008

STATE OF UTAH)
) : ss
 COUNTY OF SALT LAKE)

The foregoing instrument was acknowledged before me this 24 day of April, 2008, by Marlon L. Bates, successor trustee.

Marlon L. Bates
 Marlon L. Bates, successor trustee

Daniel M. Spendlove
 NOTARY PUBLIC

